

How To Repair A Defective Light Switch

In a turned on world, a defective light switch is definitely not what should be happenin', baby. If you want to restore that sweet light of lights, carry on.

Utensils

Pocketknife
Medium flat blade screwdriver
Hammer
Diagonal cutters
Wire stripper
Linemen's pliers
Long-nosed pliers

Ingredients

New toggle switch
New faceplate
2 #8 wire nuts
2 6" inch lengths of #14 insulated wire
2 #6 sheet metal screws,
1" inch in length

Approximate Time: 60 Minutes

1. **Cut off power** by removing fuse or tripping circuit breaker that controls junction box.
2. Making a deep score with the knife, cut the paint from around the old faceplate.
3. Remove screws from faceplate. If screw slots are filled with paint, chip away with screwdriver and then remove screws.
4. Place screwdriver at edge of faceplate, tap with hammer, and faceplate will come away.
5. Remove the 2 screws from the bar plate that secured switch to junction box.
6. Pull switch out of box and remove wires from switch by turning screws counterclockwise. See Figure 61A.
7. If junction box is dusty or dirty, clean with vacuum cleaner.
8. If wires are frayed or uninsulated, cut away defective portion with diagonal cutters and restrip insulation with wire stripper.
9. Attach wires with newly stripped ends to the old wires by twisting both together with linemen's pliers in clockwise direction (approximately four turns).
10. Screw wire nuts onto newly spliced ends. See Figure 61 A.
11. Form a hook at the end of each wire with long-nosed pliers (Fig. 61B).



12. On many new toggle switches, you'll find 2 terminal screws on one side of the switch. Other switches have a single screw on each side. Regardless, loosen screws in counterclockwise direction, but do not remove.

13. Hook wires to terminal screws in clockwise direction.

14. Tighten screws over hooks in clockwise direction (Fig. 61 A).

15. At either end of bar strip, there are 2 extensions called horns. If these interfere with easy replacement of switch into junction box, break them off with long-nosed pliers.

16. Push wires into junction box with screwdriver handle.

17. Line up elongated holes of bar plate with screw holes in junction box, making sure that the "off" position shows when the switch is down and screw into place (using sheet metal screws if original screws no longer hold). Make sure bar plate is even with wall at top and bottom.

18. Replace faceplate.

19. Figures 61C and 61D are typical circuitry for toggle switches.

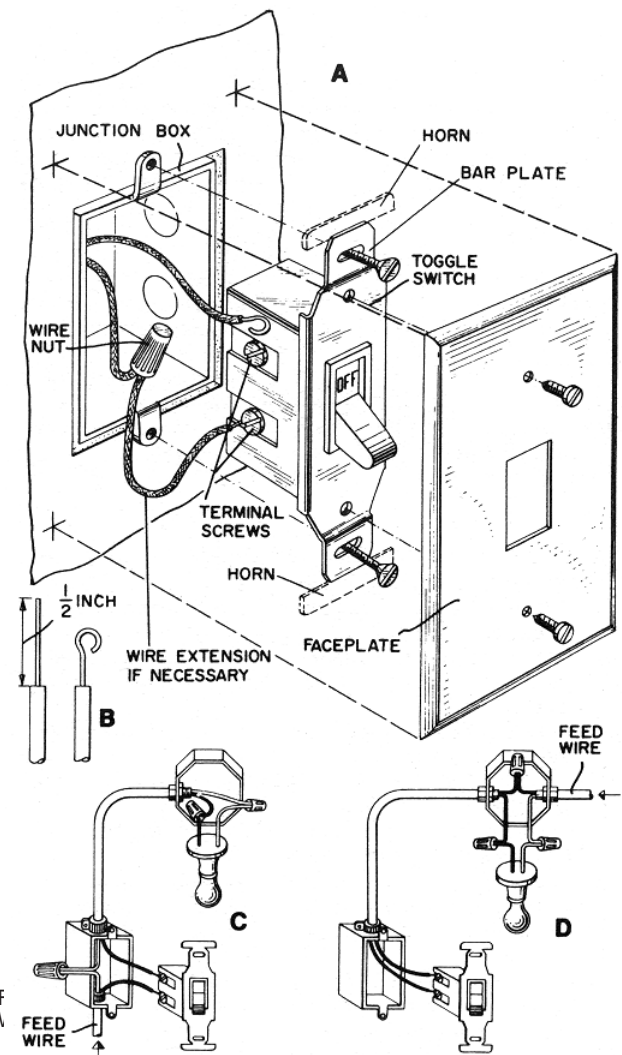


Figure 61.
Repairing a Defective Light Switch