

How To Replace Female Plug For An Appliance

To show that all things are equal, we now turn our attention to the defective female plug. Because these plugs come in all shapes and sizes, it will be necessary for you to take the broken one along with you to the hardware store so that it can be matched perfectly with a new one.

Ingredients

Soldering paste or flux (non-acid)
Coil of solder, resin core
New female plug (buy one with wire protector spring)

Utensils

Diagonal cutters
Pocketknife
Wire stripper
Soldering iron
Small flat blade screwdriver
Medium flat blade screwdriver
Long-nosed pliers

Approximate Time: 30 Minutes

1. Remove male plug from wall outlet.
2. With diagonal cutters, cut away old female plug and 2" or 3" inches of cord.
3. With pocketknife, cut away about 3/4" inch of outer fabric insulation, baring inner insulation.
4. With wire strippers, strip away 3/4" inch of inner insulation, baring the wires. Do not cut off strands.
5. Twist strands tightly in clockwise direction.
6. Dip twisted ends into soldering paste.
7. Heat twisted ends with soldering iron.
8. Apply end of solder coil and let run through strands.
9. Let cool.
10. With small screwdriver, remove screw in center of new plug and disassemble. Some plugs have two screws, others have a screw on one side and a nut on the other (Fig. 58A).
11. Also disassemble interior unit (Fig. 58B).
12. You will now see two contacts (Fig. 58B), each of which has a screw. Loosen screws with medium screwdriver but do not remove.

13. With long-nosed pliers, form hooks of the twisted wire ends.
14. Place hooks around contact screws in clockwise direction.
15. Tighten screws in clockwise direction with medium screwdriver. Cut away excess wire with diagonal cutters.
16. Place contact prongs into slot of plug.
17. Place protector spring in position.
18. Reassemble two halves of plug. Holding the nut on the bottom of the plug, insert screw and tighten with small screwdriver (Fig. 58C).
19. Insert female plug into appliance, plug male end into wall, and test.

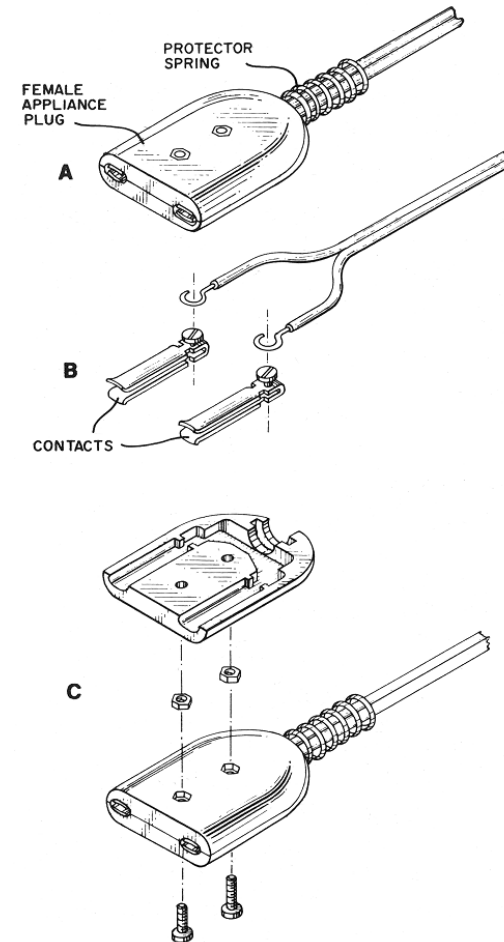


Figure 58.
Repairing Female Appliance Plug